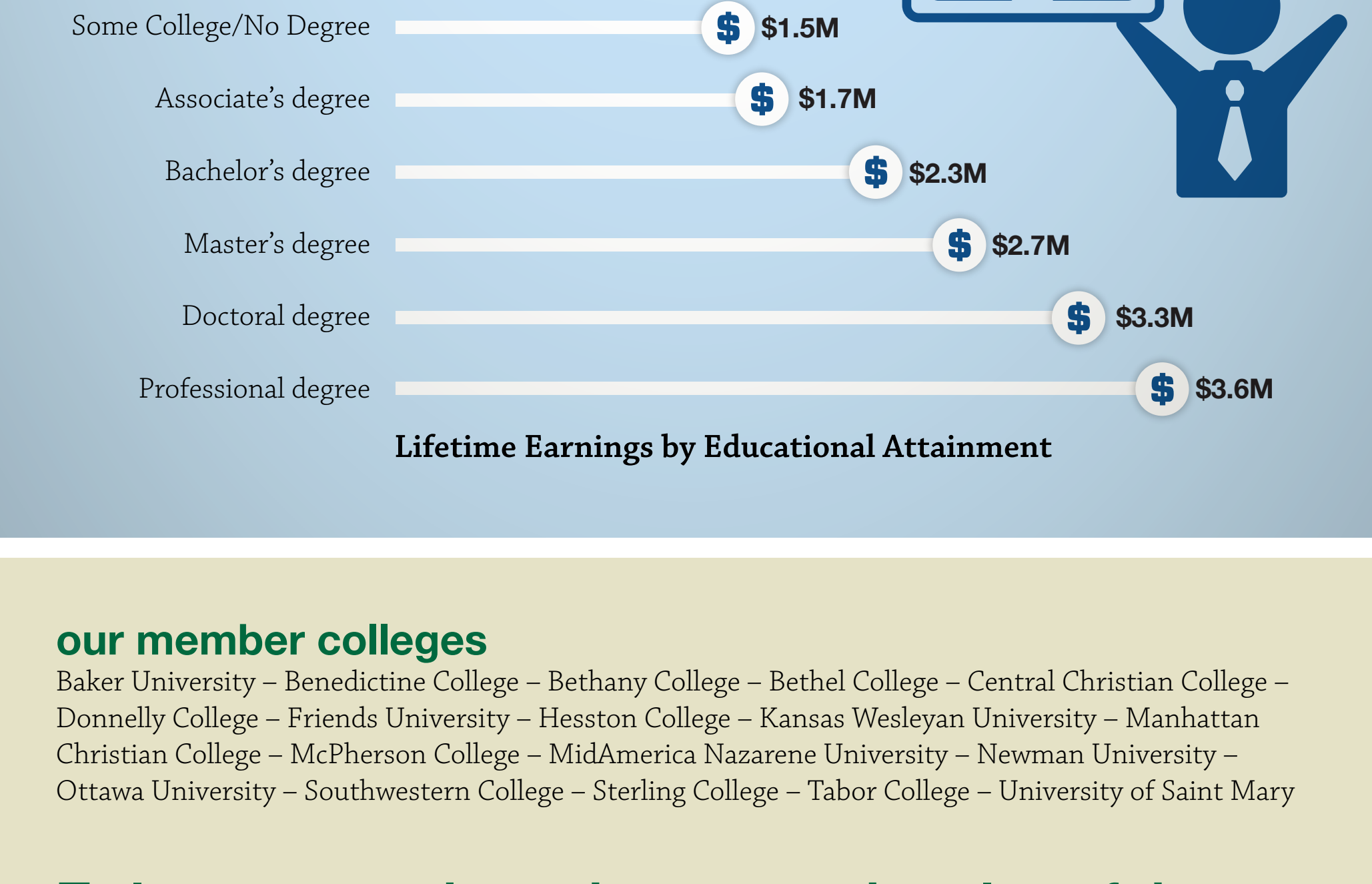
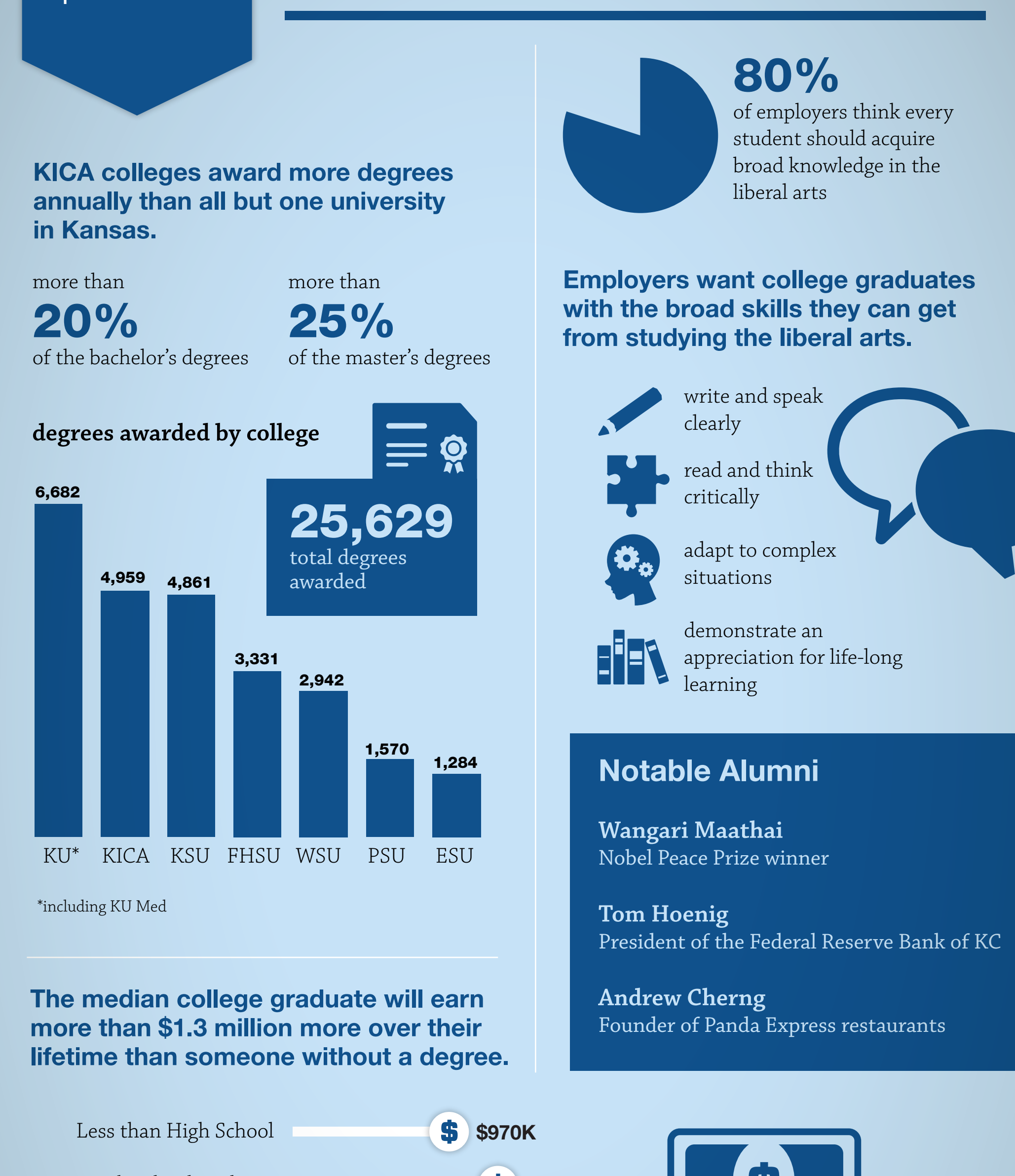
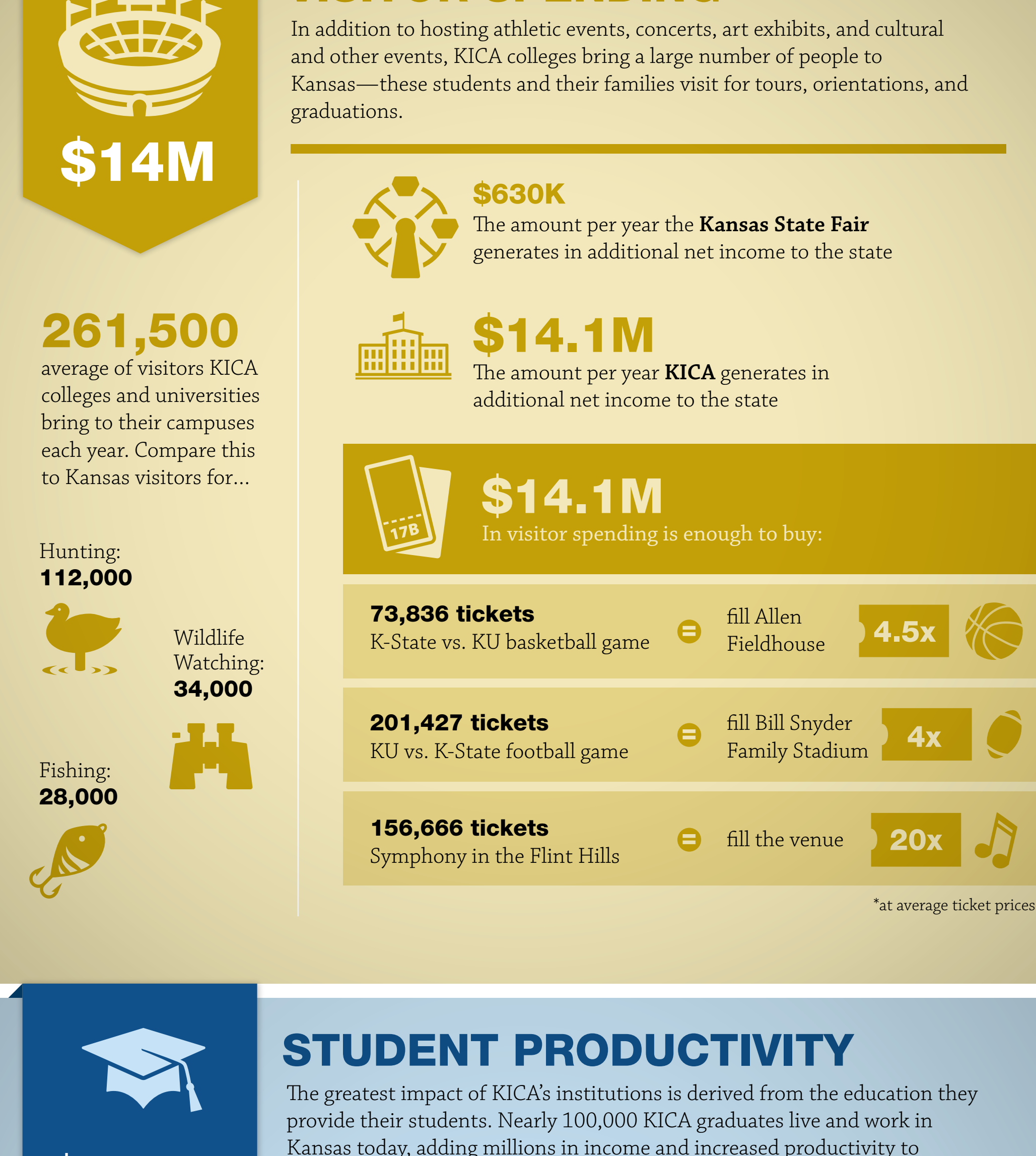
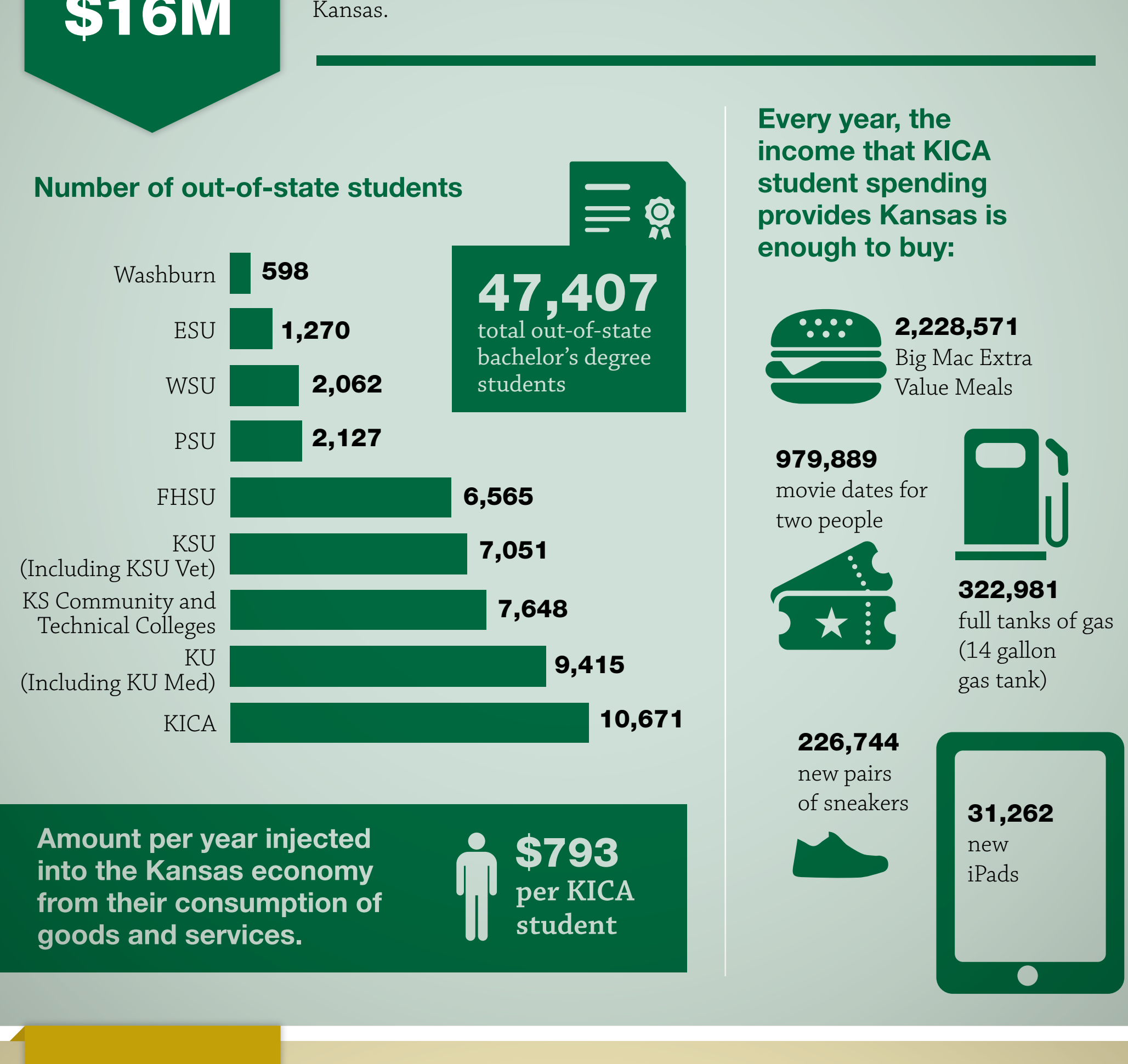
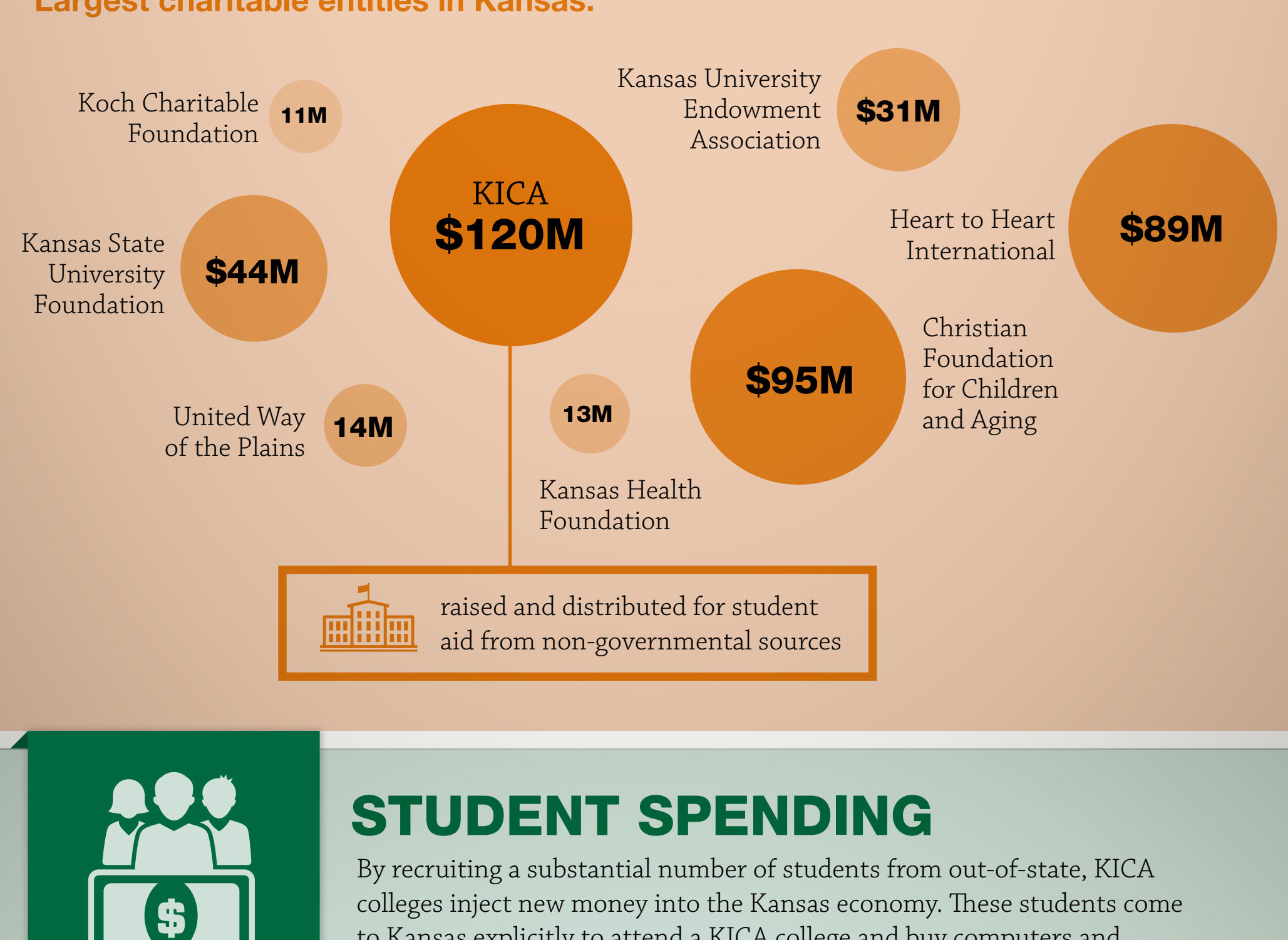
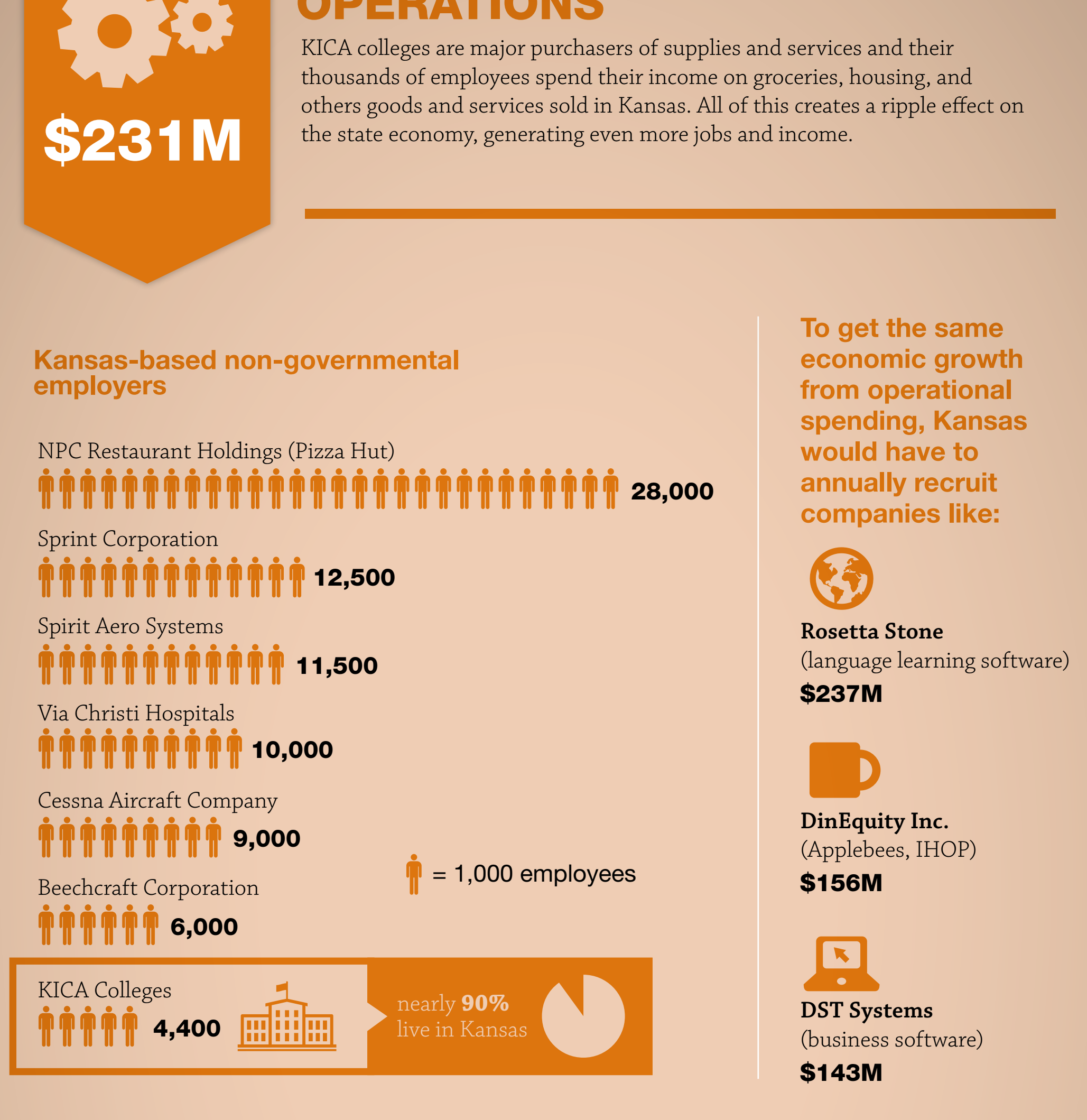
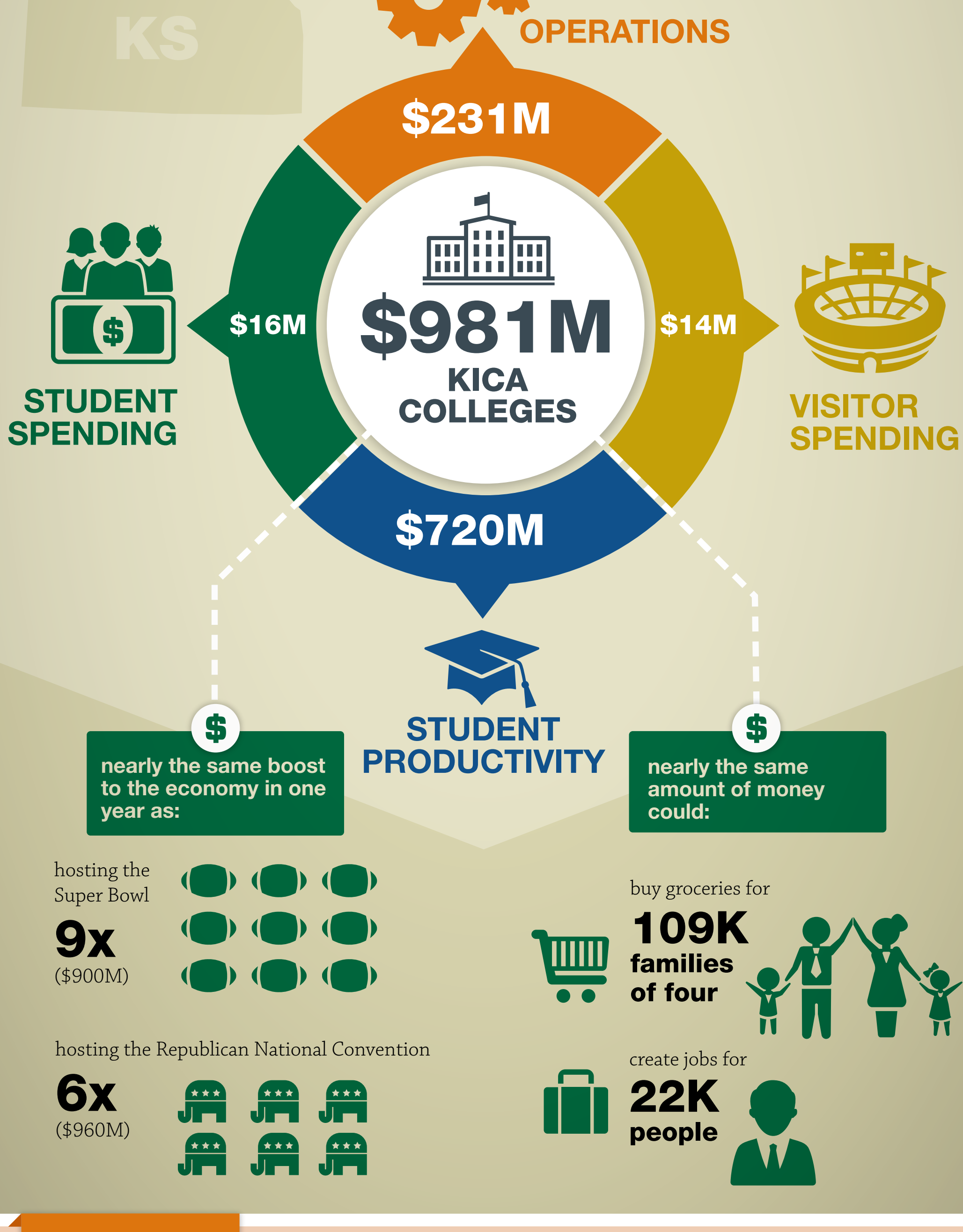


# Kansas' Independent Colleges and Universities:

## Generating Income and Creating Economic Growth for all Kansans

Kansas' independent colleges generate over \$980 million a year in new income for the state of Kansas through the spillover effects of their own operations, the spending of their own students and their campus visitors, and the long-term productivity of their graduates.



**our member colleges**

Baker University – Benedictine College – Bethany College – Bethel College – Central Christian College – Donnelly College – Friends University – Hesston College – Kansas Wesleyan University – Manhattan Christian College – McPherson College – MidAmerica Nazarene University – Newman University – Ottawa University – Southwestern College – Sterling College – Tabor College – University of Saint Mary

**To learn more about the economic value of the Kansas Independent College Association, visit <http://www.kscolleges.org/economic-impact.html>**

**Sources:**

EMSI. "Demonstrating the Value of the Kansas Independent College Association." (June 2014)

Victor Matheson and Robert Baade. "An Evaluation of the Economic Impact of National Football League Mega-events." (August 2011)

Robert Baade, Robert Baumann, and Victor Matheson. "Rejection of 'Conventional' Wisdom: Estimating the Economic Impact of National Conventions." (April 2008)

Elise Gould, Hilary Wething, Natalie Sabadish, and Nicholas Finio. "What Families Need to Get By: The 2013 Update of EPFS Family Budget Calculator." (July 2013)

Kansas Department of Commerce (Employment and Economy Charts)

America's Career Infonet (State Profile: Largest Employers)

Rosetta Stone, DinEquity Inc., and DST Systems (2013 company financial statements)

Foundation Directory Online (2012 data)

Kansas Board of Regents. KHBER data (Fall 2012)

United States Census Bureau, Numbeo, and Apple Inc.

Kansas Independent College Association. (Comprehensive Survey, 2013)

US Fish and Wildlife Service. "2011 National Survey of Fishing, Hunting, and Wildlife-Associated Recreation." (August 2012)

Patricia Oslund and Shannon Portillo. "Kansas State Fair: Visitor Attributes, Demographics, and Economic Impact Analysis." (October 2009)

Venues provided current average ticket prices and seat capacities.

Kansas Board of Regents. KHBER data (Fall 2012)

Kansas Independent College Association. (Comprehensive Survey, 2013)

Council of Independent Colleges (Liberal Arts Resources-Infographics)

Association of American Colleges and Universities. "It Takes More than a Major: Employer Priorities for College Learning and Student Success." (April 2013)

Anthony Carnevale, Stephen Rose, and Ban Cheah. "The College Payoff: Education, Occupations, Lifetime Earnings." (2011)